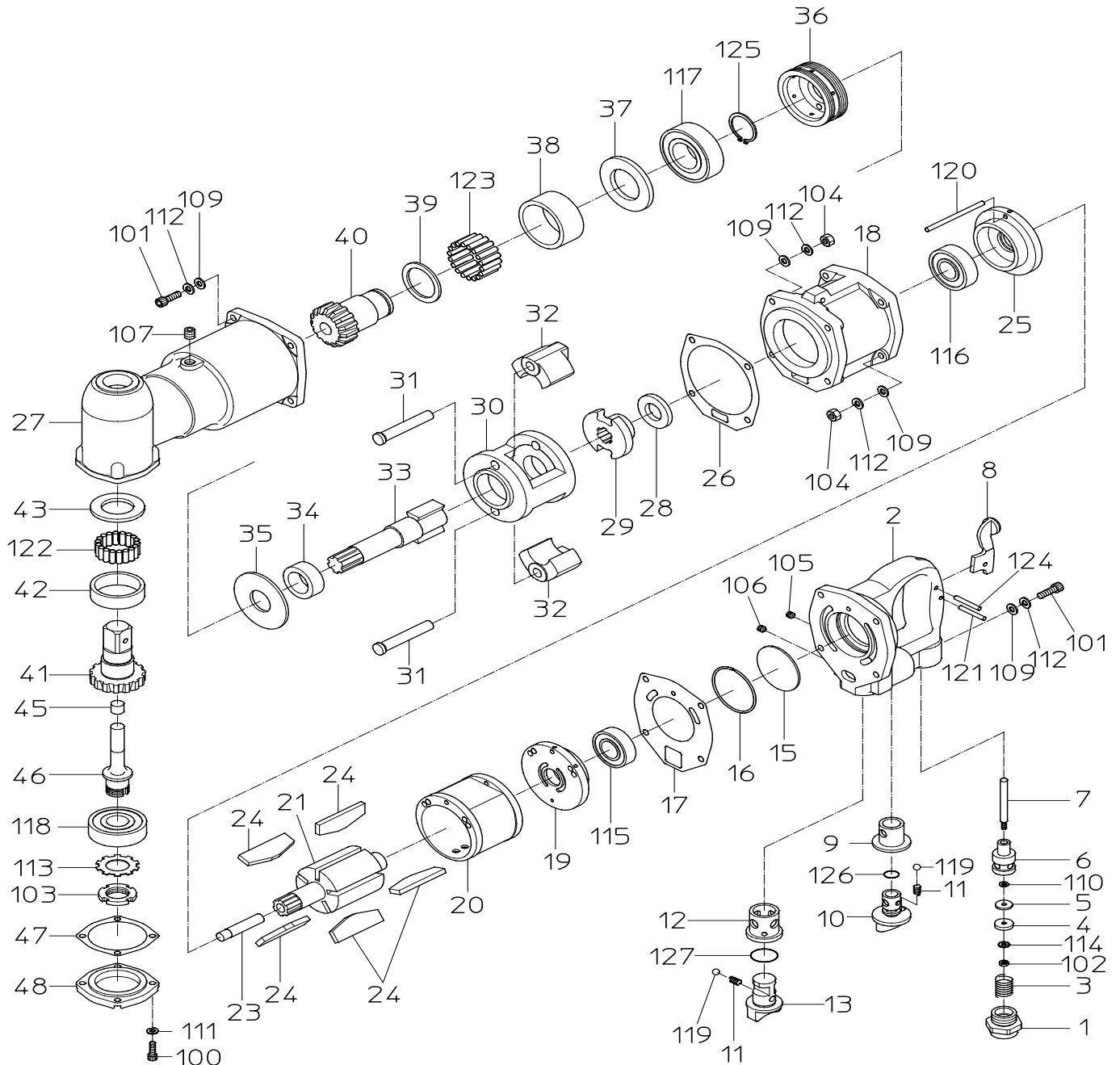


PARTS LIST

NAW-19A

522341(I52011)

522351 (I52061)(NPT)



日本ニューマチック工業株式会社
NIPPON PNEUMATIC MFG.CO.,LTD.

新旧対照リスト

COMPARISON LIST

(1/2)

型式 MODEL: **NAW-19A**

符号 ITEM	新品番 NEW PART NO.	現状品番 CURRENT PART NO.	NEW PART NAME	CURRENT PART NAME	個数 Q'ty
1	15202170	I12010H020	INLET BUSHING	INLET BUSH	1
2	15202210	I12010H550	HANDLE	HANDLE	1
3	15202130	I12010B210	THROTTLE SPRING	THROTTLE SPRING	1
4	15202200	I12010H340	THROTTLE WASHER	THROTTLE WASHER	1
5	15202490	I12010V420	VALVE SHEET	VALVE SEAT	1
6	15202180	I12010H270	THROTTLE BUSH	THROTTLE BUSH	1
7	15202190	I12010H310	THROTTLE PIN	THROTTLE PIN	1
8	15202250	I12010H880	LEVER	LEVER	1
9	15202160	I12010G020	ADJUSTER BUSHING	ADJUST BUSH	1
10	15202150	I12010G010	ADJUSTER VALVE	ADJUST VALVE	1
11	15202120	I12010B010	SPRING	SPRING	1
12	15202240	I12010H810	REVERSE BUSH	REVERSE BUSH	1
13	15202230	I12010H800	REVERSE VALVE	REVERSE VALVE	1
14	15202120	I12010B010	SPRING	SPRING	1
15	15202220	I12010H570	HANDLE PLATE	HANDLE PLATE	1
16	15202500	I12010Z340	STOPPER RING	STOPPER RING	1
17	15202390	I12010P300	TOP SEAL	TOP SEAL	1
18	15202460	I12010R730	ROTOR CASE	ROTOR CASE	1
19	15202420	I12010R300	TOP PLATE	TOP PLATE	1
20	15202410	I12010R200	CYLINDER	CYLINDER	1
21	15202451	I12011R721	ROTOR	ROTOR	1
23	15202480	I12010R760	ROTOR PIN	ROTOR PIN	1
24	15202430	I12010R500	VANE	VANE	5
25	15202440	I12010R510	BOTTOM PLATE	BOTTOM PLATE	1
26	15202400	I12010P500	BOTTOM SEAL	BOTTOM SEAL	1
27	15208370	I52010I450	HAMMER CASE	HAMMER CASE	1
28	15202280	I12010I200	SPACER	SPACER	1
29	15202300	I12010I300	SCREW DRIVER	DRIVER	1
30	15202350	I12010I490	HAMMER FRAME	HAMMER FRAME	1
31	15202340	I12010I480	HAMMER PIN	HAMMER PIN	2
32	15202330	I12010I470	HAMMER	HAMMER	2
33	15208360	I52010I050	ANVIL	ANVIL	1
34	15202260	I12010I010	ANVIL BUSH	ANVIL BUSH	1
35	15202290	I12010I210	THRUST WASHER	THRUST WASHER	1
36	15208490	I52010Z910	LOCK SCREW	LOCK SCREW	1
37	15208450	I52010S630	BEARING WASHER	BEARING WASHER	1

新旧対照リスト

COMPARISON LIST

(2/2)

型式 MODEL: **NAW-19A**

符号 ITEM	新品番 NEW PART NO.	現状品番 CURRENT PART NO.	NEW PART NAME	CURRENT PART NAME	個数 Q'ty
38	15208440	I52010S490	ROLLER BUSH	TOP ROLLER BUSH	1
39	15208500	I52010Z950	WASHER	WASHER	1
40	15208400	I52010S010	ACCEL GEAR	ACCEL GEAR	1
41	15208420	I52010S300	SPINDLE GEAR	SPINDLE GEAR	1
42	15208460	I52010S650	ROLLER BUSH	BOTTOM ROLLER BUSH	1
43	15208480	I52010Z100	COLLAR	COLLAR	1
45	15208430	I52010S380	GEAR PIN	SPINDLE GEAR PIN	1
46	15208410	I52010S150	GEAR SPINDLE	GEAR SPINDLE	1
47	15208390	I52010P200	SEAL PACKING	SEAL PACKING	1
48	15208380	I52010I530	CASE CAP	HAMMER CASE CAP	1
100	74005015	1050105015	CAP SCREW	HEX. SOCKET CAP SCREW	4
101	74006035	1050106035	CAP SCREW	HEX. SOCKET CAP SCREW	8
102	76121204	1204020104	HEX. NUT	HEX. NUT	1
103	28100401	1300000720	NUT FOR ROLLING BEARING	NUT FOR ROLLING BEARING	1
104	76111206	1204010106	HEX. NUT	HEX. NUT	8
105	28100465	1602010612	SET SCREW	HEX. SOCKET SET SCREW	1
106	28100468	1602010620	SET SCREW	HEX. SOCKET SET SCREW	1
107	28100501	1700111007	HEX. SOCKET PLUG	HEX. SOCKET PLUG	1
109	76310206	1951010060	WASHER	PLAIN WASHER	16
110	76323204	1951020040	WASHER	PLAIN WASHER	1
111	76420105	1954020050	SPRING WASHER	SPRING WASHER	4
112	76420106	1954020060	SPRING WASHER	SPRING WASHER	16
113	28100547	1956020200	WASHER FOR ROLLING BEARING	WASHER FOR ROLLING BEARING	1
114	28100548	1957010040	LOCK WASHER	TOOTHED LOCK WASHER	1
115	28201083	2012006004	BALL BEARING	BALL BEARING	1
116	28201091	2012006204	BALL BEARING	BALL BEARING	1
117	28201093	2012006206	BALL BEARING	BALL BEARING	1
118	28201101	2012006304	BALL BEARING	BALL BEARING	1
119	28205026	2800110175	STEEL BALL	STEEL BALL	2
120	28206113	3011040860	PIN	PARALLEL PIN	1
121	28207110	3020040180	ROLLER PIN	ROLLER PIN	1
122	35100615	3020060150	ROLLER PIN	ROLLER PIN	18
123	28207170	3020060220	ROLLER PIN	ROLLER PIN	21
124	28208107	3030040250	SPRING PIN	SPRING PIN	1
125	25307260	3200010300	RETAINING RING	RETAINING RING	1
126	61200120	4150100120	O RING	O RING	1
127	61200200	4150100200	O RING	O RING	1